

Novaculture

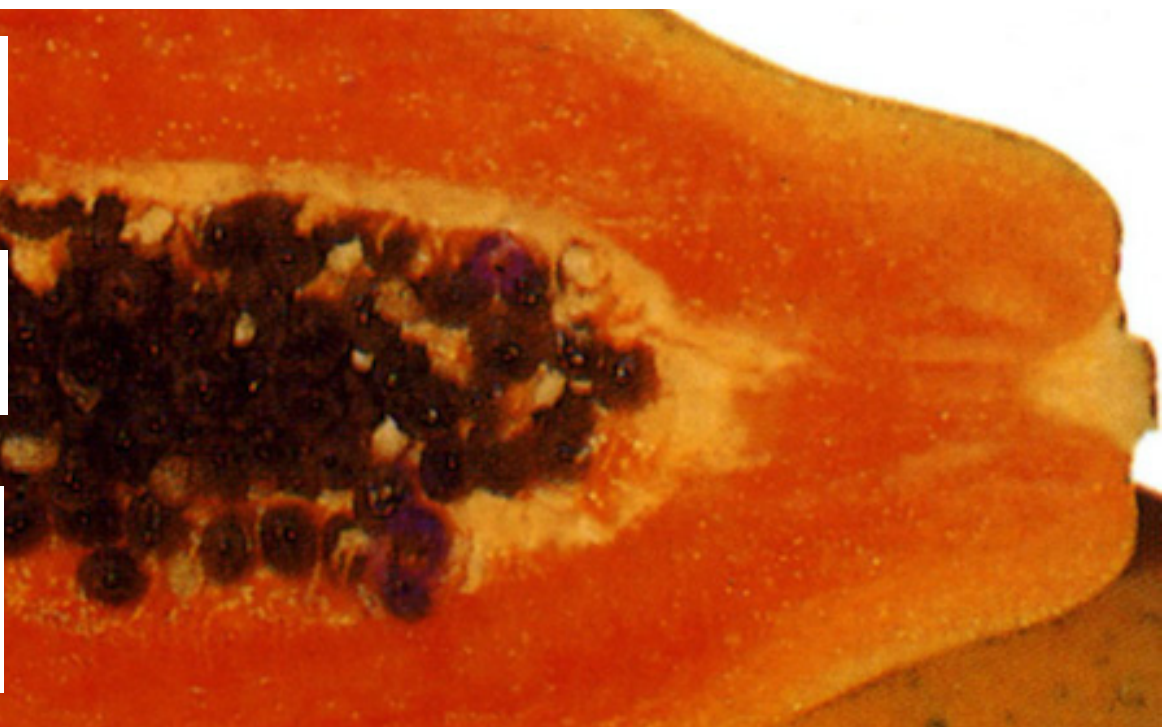
Technical journal on vegetable seeds

N°19

Page 2: **Training**
Timescale of seed
production

Page 4: **Question**
What's behind a red
lettuce?

Page 5: A website and an
Instagram page dedicated
to the passionate and
curious of watermelon.



A NOVELTY IN THE SPOTLIGHT

Carott RIHANNA F1



**Carott
RIHANNA F1**

RIHANNA F1, is our new variety in the off-season carrot segment! The variety complements our high-performance carrot with VANESSA F1 for the cold season and ALICIA F1, the « all season» variety of the range.

RIHANNA F1 presents a very good behavior in difficult wet conditions with a good disease resistance and in particular to late leaf blight disease! Enjoy roots that are homogeneous in shape and size. Its narrow core provides a fleshy root with a good sweet taste.

The new variety RIHANNA F1 will attract people on the stalls with roots in attractive shapes and colors. Want to have variety in your store in 2021?

Don't hesitate, ask it to your retail store!

Steven BOUFFAY Alliums Product Manager
and Root vegetables, TECHNISEM France

TIMESCALE OF SEED PRODUCTION

In a globalized world, reduction of production time is a serious advantage for competitiveness. Agriculture is one of those sectors where this factor is difficult to compress. When a Novalliance's customer buy our seeds, how can he imagine that production order has been decided one, two or three years before?

Feedback from our customers is taken into account and forwarded to the product manager. Collecting all the information, he's taking the production order and a contract is negotiated with seed producers in the different area and in different season. Depending on species, this job could be difficult. Indeed, every species, sometimes each variety, has its own behavior and cycle length.

We can consider also the photoperiodism (day length) and the themoperiodism (effect of the temperature high or low in the plant development). Those factors will limit the place and the season where production is possible.

For instance Zucchini squash is a quite flexible species. You can produce it in many place, with no effects from the length of the day. Some area

offers several cycle a year. In good condition, you can expect to receive the seed 6 to 8 months after the production order.

Conversely, there is the example of onion seed production. Onion is a biannual crop, the cycle is very long. First year plant is making reserve (bulbs) and second year the plant is bolting to make seeds. It is common to receive the seed more than 2 years after ordering them.

Seeds shortage can be long to resolve depending on the species and we don't talk about crop failure risks. In addition to all what we explained you can add time for delivering the stockseed, time for harvesting-cleaning and packing the seed, time for shipment from production area and from the seed company to the final sales point, etc.

A sudden and significant increase in need can therefore take more or less time to satisfy. That's why we all have a role to play in feeding back information about varieties adapted and requested by the market and in forecasting quantities we will need in the next season.



Onion production



Lettuce production

RIDGING

Ridging consists of cultivating in rows on small strips of land about 15 to 20 cm high. This technique is practiced on all soil textures. All crops are favoured and all types of farming (conventional, reduced doses, without inputs, as well as organic) are easily adapted to it.

In sub-Saharan Africa, the technique is mainly used during wintering when soil moisture is important. Due to the ridge-shaped layout of the land, plant roots are less subject to high soil moisture as drainage is facilitated.

Some advantages of ridging :

- Higher soil temperature in the ridge ;
- Better root development (looser rhizosphere) ;
- A better drainage while conserving moisture by capillary action ;
- Reduced water and wind erosion: it is more efficient if the ridges are oriented perpendicular to the erosive prevailing wind and the slope (runoff) ;
- Improvement of soil structure (reduces compaction) ;

- A reduction in the amount of fertilizer.

However, in hot dry season and cool dry season, the effectiveness of the technique depends very much on the type of soil. The method can give good results on heavy soils (clay or clay-silt) but is not suitable for coarse soils that dry too quickly.



Ridging

Soumaïla DON, Development Manager
MALI SEMENCES

QUIZZES



@Novaculture

facebook®
QUIZZ



Can you name a root vegetable ?



It's easy to play, all you have to do is:

- Like the Facebook page
- Send a private message to the Novaculture Facebook page with: «#Novaculture Games-February 2021: give the answer».

Drawing lots among the winners. The winner will be announced on Facebook and in the next Novaculture magazine. There are many prizes to be won!

Winner of the previous issue: Mr. Babacar Sadikh TOP, Journalist / Agricultural business owner. Thies, Senegal. **Congratulations to all for your participation!**
The question asked was: «What is the color of onion seeds?» and the answer was «black».



4 QUESTION OF THE MONTH

What's behind a red lettuce?

Lettuce (*Lactuca sativa* L.) is one of the vegetables whose leaves are the most consumed in the world. There is a great diversity of shapes, textures and colors that are the basis for the classification of this species, with its different types and varieties (batavia, iceberg, romaine ...).

The color of the lettuce leaves ranges from yellow to dark green, with different degrees of brightness, passing through the red color, of variable intensity and distribution. It can cover part or all of the leaf, appear as spots or just on the edge.

This red color is due to anthocyanins. These are natural flavonoids that are largely responsible for the color variation of flowers and fruits in the plant kingdom and are known for their positive effects on health.

In addition to adding a touch of color to salads, this vegetable offers many benefits.

Red lettuce is very nutrient dense, rich in essential vitamins and minerals. It has a high-water content and a low-calorie count, which makes it an excellent complement to a weight-loss diet.

It is a great source of antioxidants, especially anthocyanins, beta-carotene and vitamin C. These protect the body from damage caused by unstable molecules called free radicals.

Also, it contains decent amounts of magnesium and potassium, which can improve the health of your heart. It is rich in vitamin A, a nutrient essential for maintaining vision and immunity.

Finally, it is an excellent source of vitamin K, a nutrient that plays a role in blood clotting and bone health.



CANDARA Lettuce



GINA Lettuce



Testimony

ADAMU Muhammadu
producer in Gidan Bawa,
NIGERIA

I started by cultivating local seeds before being advised to use TECHNISEM's seeds, especially the KAOLACK variety. Although I had to receive samples of several seed varieties, I always preferred to grow KAOLACK. I chose KAOLACK first of all because it has a very good adaptability, a good fruit size compared to other local varieties and finally because the color and shape of the fruits are generally very accepted in our watermelon market in Nigeria.

With few exceptions, I buy all my seeds in the AGRITROPIC agency in Lafia, Nasarawa state or from a reputable Agro seed dealer. Since I have been using TECHNISEM certified seeds, I have realized that they are of better quality than other companies.

I will continue to work with TECHNISEM seeds and urge them to maintain the quality. My second choice of watermelon will be on the new improved varieties like KAYACK and PINK SWEET because I have learned that they have almost the same characteristics but with a good improvement in color, very sweet taste and size.

Thank you TECHNISEM, thank you AGRITROPIC for making me a proud farmer.



Lambert Natan KWAYEP
Regional Developer, Agrivision Cameroon



A website and an Instagram page dedicated to the passionate and curious of watermelon.

We are happy to share with you a project that is close to our heart. We are two collaborators of TECHNISEM who wanted to set up a blog and an Instagram page to promote and federate a community of passionate people around watermelon.

In this context, an interactive blog in French Passion Pastèque was created at the end of December 2020 where professionals and amateurs can share their know-how, get inspired by culinary trends, discover the uses and initiatives of producers and amateur gardeners while being seduced by the fun activities to be discovered by all ages, from the youngest to the most creative adults!

At the same time, we have also created a page on Instagram **Passionpasteque_officiel** to relay trends, recipes and initiatives but also the photo contests that we will not fail to set up. The Passion Pastèque project contributes to the discovery of all the secrets of this fruit so thirst-quenching and popular all over the world!

Don't hesitate any longer, come and discover and share your ideas by joining the network of contributors on <https://passionpasteque.com/> but also on our Instagram account https://www.instagram.com/passionpasteque_officiel/



Marion PEREZ, TECHNISEM, France
Anne-Laure GRIMAUD, TECHNISEM, France



Recommended varieties for the next three months according to geographical areas*

Below are several varieties provided by TECHNISEM for sowing in three defined areas. These tips are valid for the following months: February, March, April.

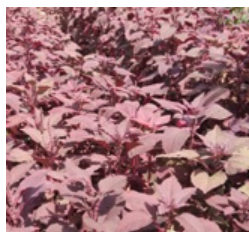
The team of product managers TECHNISEM, France and Regional Developers based in Africa



SPECIES	SUDANO-SAHELIAN AREA	COASTAL AFRICA AREA	CENTRAL AFRICA AREA
	Cool dry season	Hot dry season	Rainy season / Cool dry season
TOMATO	KIARA F1, ANAYA F1	KIARA F1, ANAYA F1	ANAYA F1
	JAGUAR+ F1, MONA F1	JAGUAR+ F1, MONA F1	LADY NEMA F1
	COBRA 26 F1	COBRA 26 F1	NADIRA F1
	COBRA 34 F1	COBRA 34 F1	KIARA F1
	RODEO 84 F1	RODEO 84 F1	RIO GRANDE +
	RIO GRANDE +	RIO GRANDE +	
ONION	GANDIOL + (February)	ARES (April)	SAFARI,
	ARES (April)		ARES, JULIO
			ROUGE DE TAMA
OKRA	BALTO F1	BALTO F1	KIRIKOU F1
	KODA F1	LUCKY 19 F1	PAYSAN
	RAFIKI F1	RAFIKI F1	RAFIKI F1
	KIRIKOU F1, FESTIVAL	KIRIKOU F1	KODA F1, BALTO F1
SWEET PEPPER	ULYSSE F1	ULYSSE F1	NOBILI F1
	SIMBAD F1	SIMBAD F1	GOLIATH F1
	PIZARRO F1	PIZARRO F1	PIZARRO F1
	YOLO WONDER +, JASON F1	YOLO WONDER +, JASON F1	YOLO WONDER +, NIKITA F1
CABBAGE	VIZIR F1, MAJESTY F1	VIZIR F1, MASTER CROSS F1	SULTANA F1, MASTER CROSS F1
	SULTANA F1	SULTANA F1	ROYAL CROSS F1, MAJESTY F1
	ROYAL CROSS F1	ROYAL CROSS F1	VIZIR F1 (cool dry season)

*Geographical areas: **Sudano-Sahelian** (Cape Verde, Senegal, Mauritania, Mali, Northern Côte d'Ivoire, Northern Ghana, Northern Togo, Northern Benin, Burkina Faso, Niger, Northern Nigeria, Sudan), **Coastal Africa** (Southern Côte d'Ivoire, Southern Ghana, Southern Benin), **Central Africa** (Congo, Cameroon, Southern Nigeria, Gabon, DRC).

ZOOM ON A VARIETY



**Amaranth
CAMARA**

CAMARA is a variety with red leaves that can be produced in all seasons. Great source of nutrients and iron.